

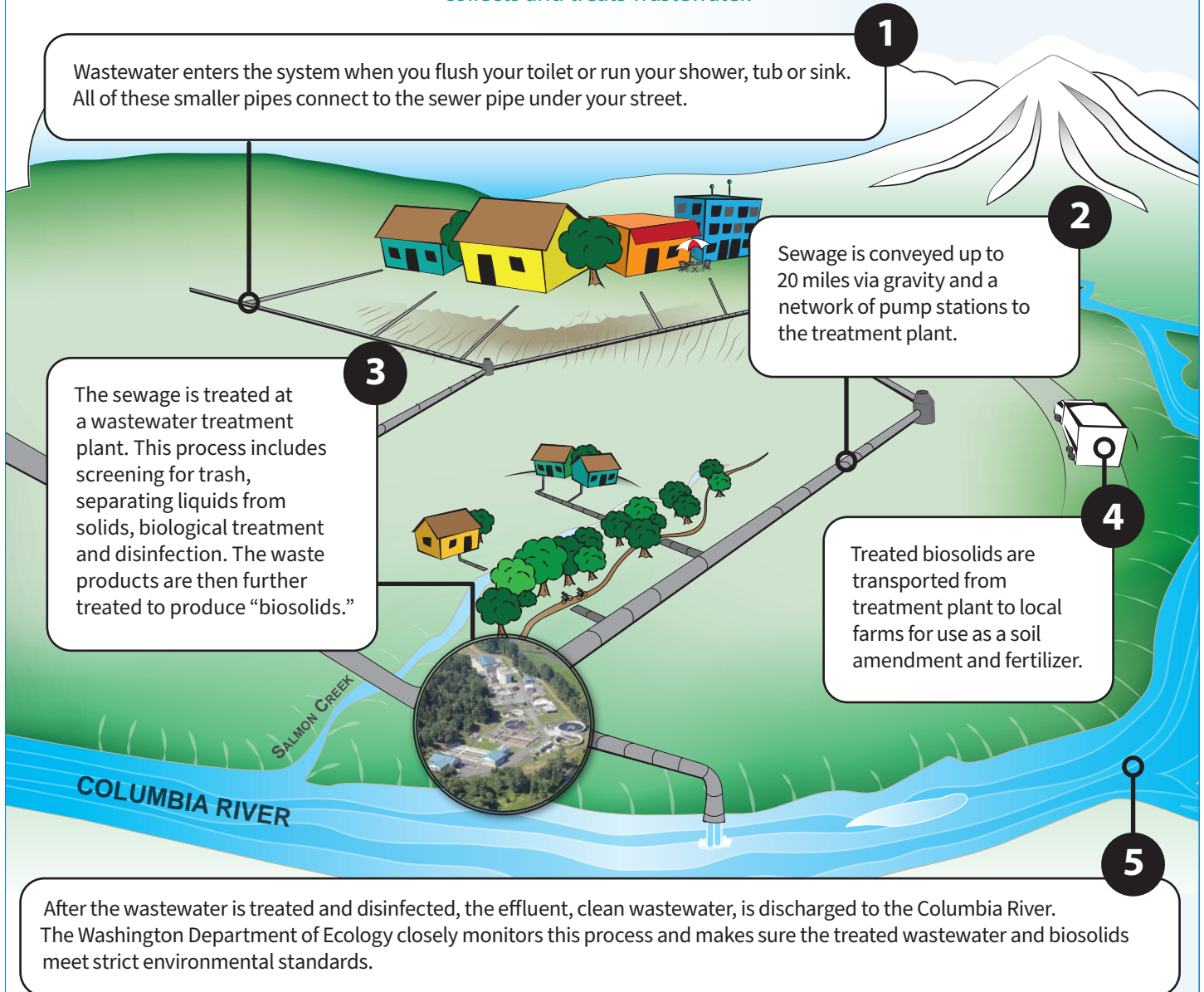
Connections

July/August 2024



Anatomy of a Wastewater System

This is the first in a series that shows where your waste goes after it leaves your home, and how the District collects and treats wastewater.



In the next newsletter: Collections 101, a first look at the District's collection system.

Hours of Operation

Monday - Friday
8 a.m. - 5 p.m.
Closed Weekends
and Holidays

Emergency?

Call 24/7:
360-750-5876

Commissioners

Norm Harker
Denny Kiggins
Neil Kimsey

General Manager

John M. Peterson, P.E.



Visit us online at www.CRWWD.com

Question from the field

Q: Who's responsible for the pipe that connects my home's plumbing to the District's sewer system?

A: This pipe is often called a side sewer or a sewer lateral because it runs laterally from under your house to the sewer pipe under the street. The portion of the side sewer that is on private property is private. Once the pipe enters the public right-of-way, it is the responsibility of the District. This transition generally occurs at a "cleanout" located behind the sidewalk. If you need help locating your lateral, you can request a copy of the sewer permit here: bit.ly/3VIC2SZ.

Senior low-income discount

Are you 62 or older? Do you live in your home year-round? You may qualify for a low-income discount on your bill. Currently, this program supports about 300 households at a cost of approximately one nickel per month to all District customers. Contact us today to find out if you qualify. For more information call (360) 993-4001 or visit crwwd.com/senior-discount.

Upcoming events

- **Ridgefield 4th of July Celebration**
- **Ridgefield National Night Out**
August 6, Bennett Hall at Abrams Park
- **Write from the Start School Supply Drive**
August

Out and about with the District



Frog represents the District at the Kline Kids Fishing Derby.



District staff attends the Hazel Dell Parade of Bands.

Did you know?

