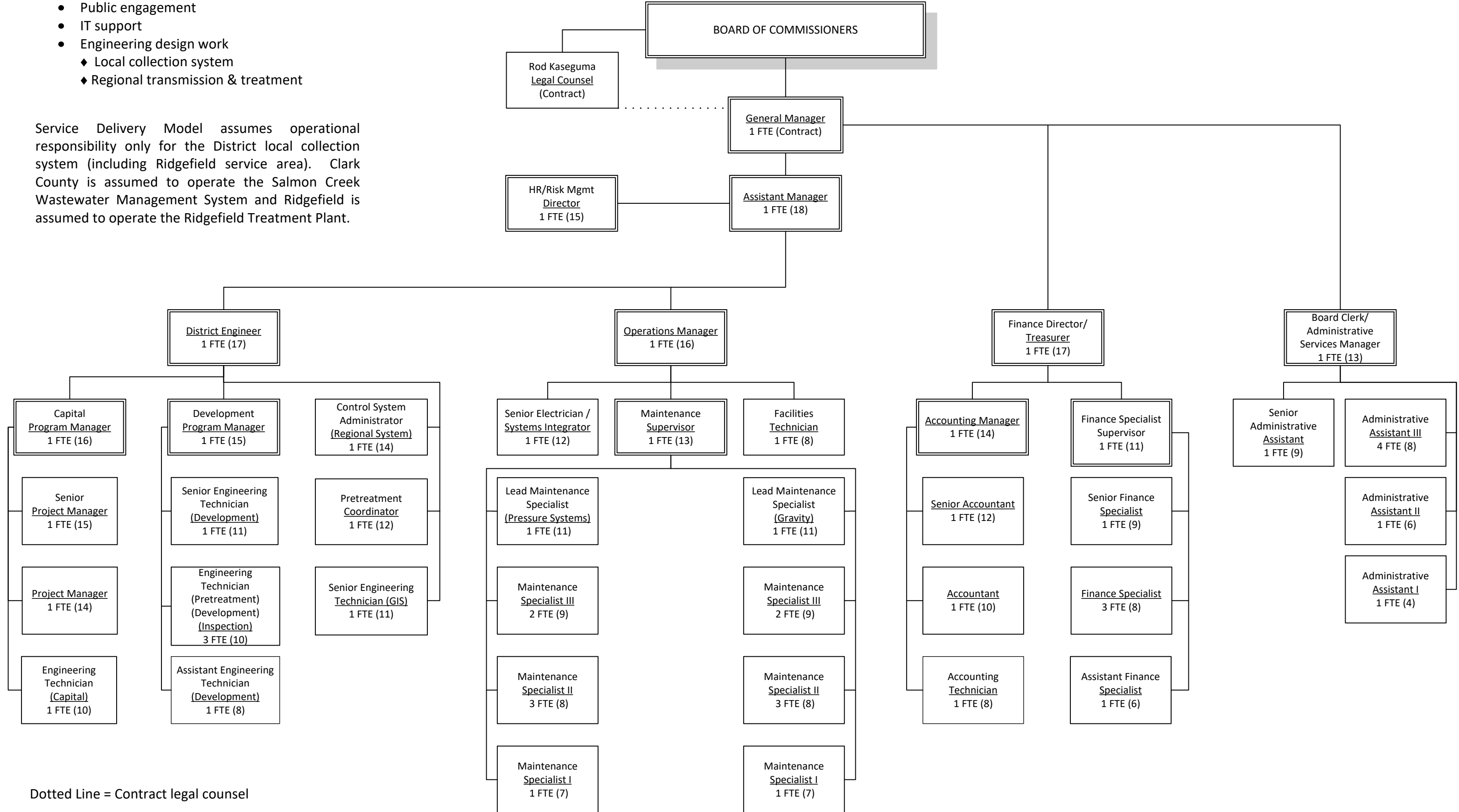


CLARK REGIONAL WASTEWATER DISTRICT ORGANIZATION CHART: 2017 BUDGET ADOPTED BY RESOLUTION #1677

Service Delivery Model requires contract support for the following functions:

- Public engagement
- IT support
- Engineering design work
 - ◆ Local collection system
 - ◆ Regional transmission & treatment

Service Delivery Model assumes operational responsibility only for the District local collection system (including Ridgefield service area). Clark County is assumed to operate the Salmon Creek Wastewater Management System and Ridgefield is assumed to operate the Ridgefield Treatment Plant.



Dotted Line = Contract legal counsel

Solid Line = Direct reporting relationship

() = Salary Range

Total FTE: 54